



**Roaring.
Performant.
Homologated.**

How ever said you can't have it all?



Trade Catalogue 2025

A Family-Owned Brand with a Global Vision

Malparidos was founded in 2019 in Delémont, Switzerland, by us—Ari and Chris, a married couple brought together by a deep passion for motorcycles and performance.

What started as a personal project evolved into a way of life.

We fell for the raw attitude of American bikes and began customizing our own.

Over time, Malparidos earned its place as a respected name in the European Clubstyle scene.

Today, **Malparidos is more than just a custom garage—it's a growing brand with a network of professional distributors, dealers and friends across Europe, Asia, Middle East and USA.**

We're proud to bring Swiss vibes and racing spirit to life and truly grateful to every rider, partner, and friend who supports our journey.

See you on the road.

Ari & Chris



Swiss precision, attitude and authenticity



Born on the streets, forged in custom culture, and tested on the open road, every exhaust system we design tells a story of **engineering precision, deep, aggressive sound, maximized torque, and unmistakable racing style.**

- **Built to Ride, Engineered to Last**

Performance is nothing without reliability.

That's why every Malparidos Exhaust is **free of electronics and valves**, crafted from **high-grade materials**, TIG-welded by hand in Italy, and **backed by a 3-YEAR-WARRANTY.**

- **Homologated Performance**

No compromises.

Our systems meet **strict European standards** without losing the signature **Malparidos' sound and torque.** You get **street-legal performance** with the **full personality of a race-bred exhaust.**

- **Designed by Riders, for Riders**

We build what we ride. Built from experience. Tested on the road.

Whether you're on a **Touring, Dyna, Softail or FXR**, we understand what you need—**because we ride them too.** Developed in-house in **Switzerland** and **tested by real riders**, to deliver **performance, sound, and the ground clearance** you need **to lean and ride hard** without scraping.

Quick Guide to the Basics

Key Features

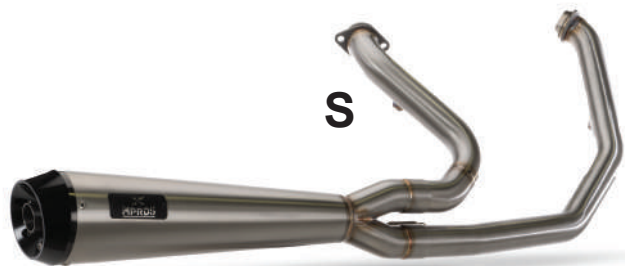
- Deep, bass-rich tone
- Aggressive racing sound at high RPM
- Enhanced torque and throttle response
- 3-Year International Warranty
- ECE Type-Approved for street-legal use in Europe
- Designed in Switzerland – Made in Italy

Material Options for Exhaust and Heat Shields

Stainless Steel (304 AISI)

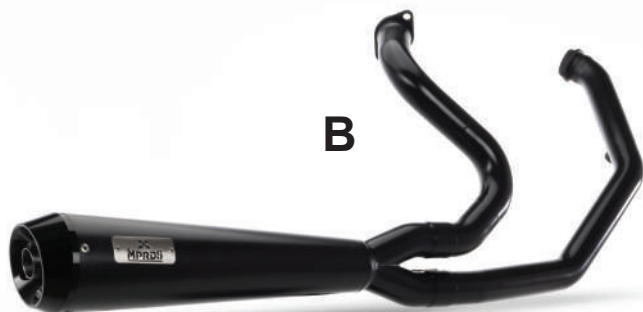
Satin Race (S)

Brushed finish with visible welds



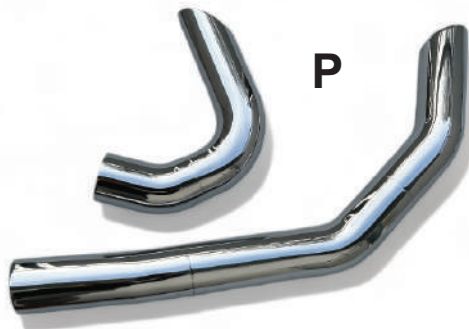
Black (B)

Cerakote Heat Resistant (1000°C)



Mirror Polished (P)

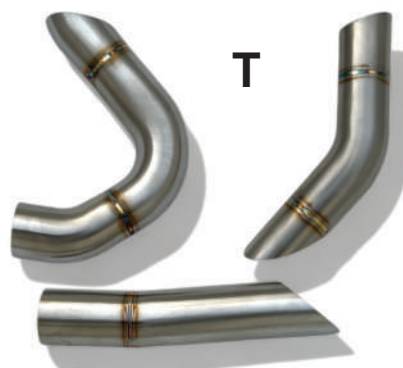
High-gloss, reflective finish



Titanium (Grade 2)

Satin Race (T)

Brushed finish with visible welds



MPRDS Exhaust Models for Harley-Davidson®



ECE type-approved-fully compliant for street use.

Find your model and refer to the corresponding page to explore all available options.

Grand American Touring

Page 5 to 8

Milwaukee 8
Euro 5
2021-2024

Milwaukee 8
Euro 4
2017-2020

Twin Cam
Euro 3
2007-2016

Softail

Page 10 to 13

Milwaukee 8
Euro 5
2021-2024

Milwaukee 8
Euro 4
2018-2020

Evo 1340
Euro 0/1/2
1986-1999

Dyna

Page 14 to 17

FXR

Page 18 to 20

Twin Cam
Euro 3
2006 - 2017

Carbureted & Twin Cam
Euro 0/1/2
1988-2005

Evo 1340
Euro 0/1/2
1988-1999

Heat Shields & Accessories

Page 21 to 22



2 in 1 Exhaust System

Euro 3 (2007 - 2016) Engines up to 110ci

Bike Built by Lio Customs Clubstyle Factory - Belgium

@lio_custom_clubstylefactory

Harley-Davidson®

Grand American Touring

2-in-1 Exhaust Systems for Touring models 2007-2024

Designed with a short racing design and engineered with a deep racing sound.

No electronic or valves.

The MPRDS™ 2-into-1 Exhaust System is designed specifically for **performance baggers** and custom builds that feature short saddlebags, allowing the exhaust to remain fully visible and contribute to the overall aggressive, clean look of the bike.



Models Available

- **Euro 3** 2007 - 2016 / Engines up to 110cci (ULTRA models excluded)
- **Euro 4** 2017 - 2020
- **Euro 5** 2021 - 2024 / Engines up to 117cci

⚠ Not recommended for extended saddlebags or long-tail setups as they may obstruct airflow and cause potential heat damage.

Fitment verified with OEM and aftermarket parts for maximum compatibility:

- OEM forward and forward single peg controls
- Arlen Ness – Mid Control Kit, Bagger
- Thrashin Supply – Adjustable Bagger Brake Arm
- Crosstread Cycles – 14+ Bagger Brake Arm
- Santoro Fabworx – Not Yo Daddy's Bag Guards

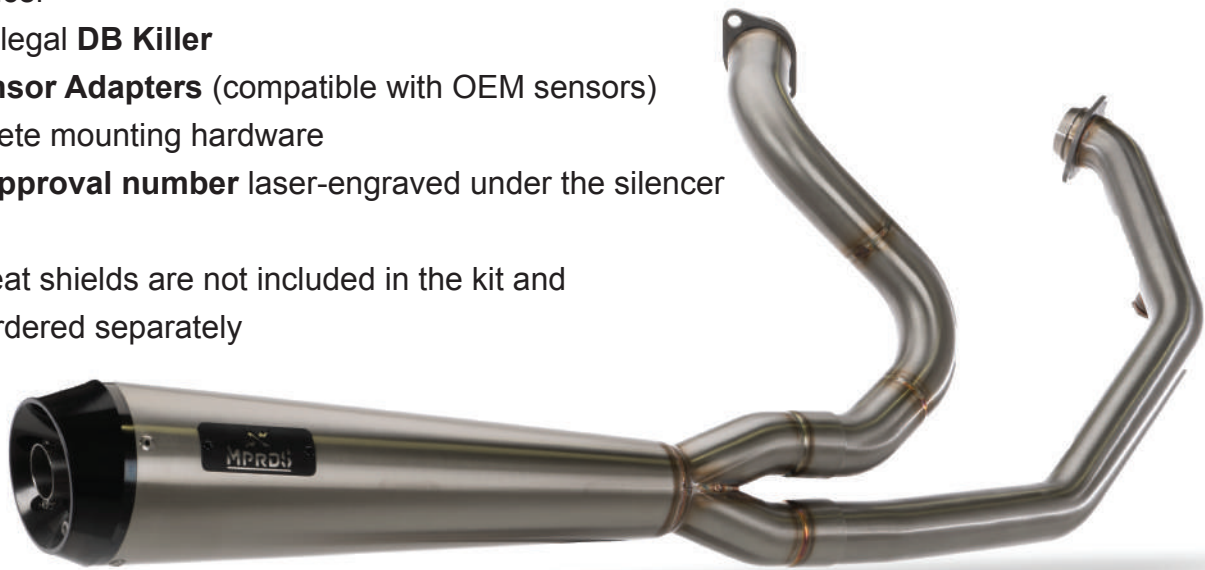
Grand American Touring

2-in-1 Exhaust Systems DETAILS

What's Included in the 2-in-1 Exhaust System

- 2 Headers
- 1 Silencer
- Street-legal **DB Killer**
- O₂ **Sensor Adapters** (compatible with OEM sensors)
- Complete mounting hardware
- **ECE approval number** laser-engraved under the silencer

NOTE: Heat shields are not included in the kit and shall be ordered separately



Catalytic Converters & Sensor Configuration

Euro 5 / Euro 4

- 2 catalytic converters integrated in the headers
- 1 catalytic converter inside the silencer
- The silencer includes 2 O₂ **Sensor Ports** as required by homologation – **no bypass needed**
- A plug is provided, allowing you to choose the ideal sensor position based on your custom setup

Euro 3

- 2 catalytic converters in the headers
- The silencer does not feature additional O₂ **Sensor Ports**



Race Only* Version (non-homologated)

- No catalytic converters
- All O₂ **Sensor Ports** and adapters are included for compatibility with OEM sensors



⚠ Disclaimer:

This version is intended for closed-course or off-road use only.

It is not approved for use on public roads and does not comply with emission regulations.

Harley-Davidson®

Grand American Touring

Exhaust System MODELS



2-in-1 Exhaust Systems

Fitment



M8 Touring models (2017-2024) with engines up to 117ci

Reference

MPT69E4E5S
MPT69E4E5B
MPT69E4E5P
MPT69E4E5T

Materiel/Finish

S.Steel/Satin
S.Steel/Black
S.Steel/Mirror Polished
Titanium/Satin

ECE-Type Approved

Euro 4 - Euro 5
Euro 4 - Euro 5
Euro 4 - Euro 5
Euro 4 - Euro 5

Fitment



Twin Cam Touring models (2007-2016) with engines up to 110ci

(Ultra models excluded) - Also available for reduced Engine power

Reference

MPT69E3S
MPT69E3B
MPT69E3P
MPT69E3T

Materiel/Finish

S.Steel/Satin
S.Steel/Black
S.Steel/Mirror Polished
Titanium/Satin

ECE-Type Approved

Euro 3
Euro 3
Euro 3
Euro 3

Fitment



M8 & Twin Cam Touring models (2007-2025)

Reference

MPT69RS

Materiel/Finish

S.Steel/Satin

ECE-Type Approved

N/A - Race Only

NEW COMING IN JULY 2025

2-in-2 Slip-on

Fitment

HD Twin Cam Touring models (2008-2016) with engines up to 110ci

Reference

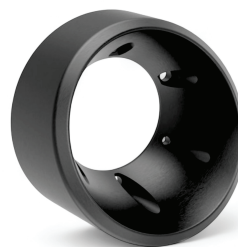
MPT22E3P
MPT22E3B

Material/Finish

S.Steel/Mirror Polished
AISI 406 Stainless Steel

ECE-Type Approved

Euro 3
Euro 3





2 in 1 Exhaust System
Euro 4 (2018-2020) Softail™ Models
Bike Built Malparidos - Switzerland
@malparidos_motoparts

Harley-Davidson® Softail™

Street Legal 2-in-1 for Softail™ Models 1986-2024

Designed with a compact short racing layout and built to deliver a **deep, aggressive tone**. **No electronics, no valves, no compromises**. The MPRDS™ 2-into-1 Exhaust System is engineered specifically for **performance-driven** Softail™ builds and clean-cut customs — where sound, power, and style all come first.

Optimized for tight turns and fast lines, the system offers **high ground clearance** for aggressive lean angles — no scraping, **just full-send performance**. Its compact shape stays fully exposed, reinforcing the bold, raw stance of your bike.



Models Available

- Euro 0/1 1986 - 1999 / Evo 1340
- Euro 4* 2018 - 2020
- Euro 5* 2021 - 2024 / Engines up to 117cci

(*) Limited Engine power

Homologated as well for reduced engine power as 33/5020 t/rim or 32/5020 t/min.

Fitment verified with OEM and aftermarket parts for maximum compatibility

- OEM mid and advanced foot controls
- LeatherPros saddlebags as well as all Thrashin saddlebags models
- On 1986 - 1999 / Evo 1340 models OEM floorboards are not fitting without modifications



2 in 1 Exhaust System

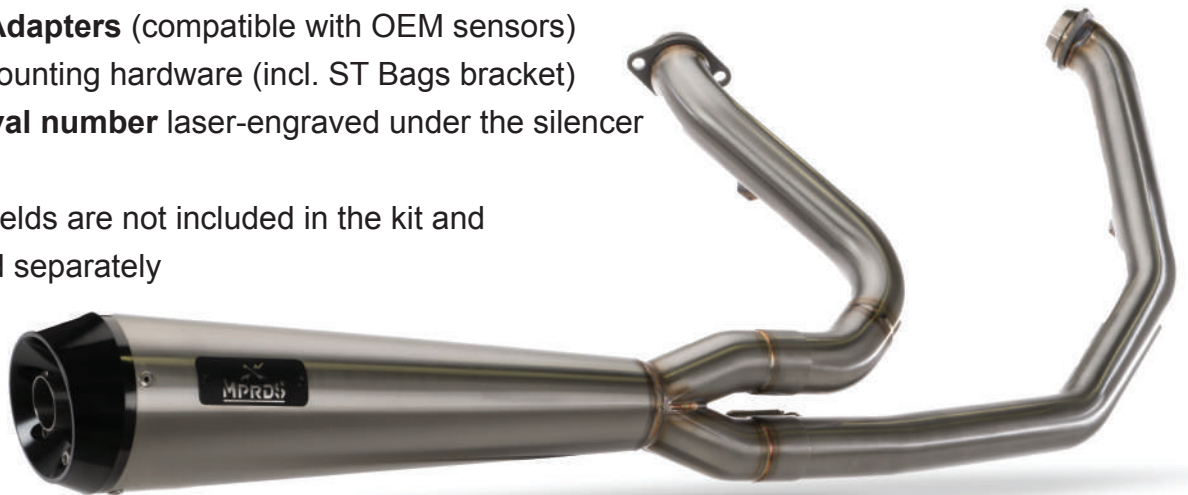
Euro 0 / 1 / 2 (1986-1999) Softail™ Models

2-in-1 Exhaust Systems DETAILS

What's Included in the 2-in-1 Exhaust System

- 2 Headers
- 1 Silencer
- Street-legal **DB Killer**
- O₂ **Sensor Adapters** (compatible with OEM sensors)
- Complete mounting hardware (incl. ST Bags bracket)
- **ECE approval number** laser-engraved under the silencer

NOTE: Heat shields are not included in the kit and shall be ordered separately



Catalytic Converters & Sensor Configuration

Euro 5 / Euro 4

- 2 catalytic converters integrated in the headers
- 1 catalytic converter inside the silencer
- The silencer includes 2 O₂ **Sensor Ports** as required by homologation – **no bypass needed**

Euro 0 / Euro 1

- 2 catalytic converters in the headers
- The silencer does not feature additional O₂ **Sensor Ports**



Race Only* Version (non-homologated)

- No catalytic converters
- All O₂ **Sensor Ports** and adapters are included for compatibility with OEM sensors

Harley-Davidson®

Softail™

2-in-1 Exhaust Systems MODELS



2-in-1 Exhaust Systems

Fitment



HD M8 Softail™ models (2017-2024) with engines up to 117ci

Reference

Material/Finish

ECE-Type Approved

MPS74E4E5S

SSteel/Satin

Euro 4 - Euro 5

MPS74E4E5B

SSteel/Black

Euro 4 - Euro 5

MPS74E4E5P

SSteel/Mirror Polished

Euro 4 - Euro 5

MPS74E4E5T

Titanium/Satin

Euro 4 - Euro 5

For Breakout and Fat Boy please add part: MPFAB

Fitment



HD Evo Softail™ Models (1986-1999) only 1340 Engines

Reference

Material/Finish

ECE-Type Approved

MPD746EVOS

SSteel/Satin

Euro 0 - Euro 1

MPD746EOVB

SSteel/Black

Euro 0 - Euro 1

MPD746EVOP

SSteel/Mirror Polished

Euro 0 - Euro 1

Fitment



HD M8 & Twin Cam Softail™ models (2000-2025)

Reference

Material/Finish

ECE-Type Approved

MPS74RS

SSteel/Satin

Race Only



2 in 1 Exhaust System

Euro 3 (2006- 2016) 6-Speed Dyna Models

Bike Built by Jim Have

@theclubstyleking / @clubstyle_europe

Harley-Davidson®

Dyna

Street Legal 2-in-1 for Dyna models 1991-2016

Designed with a short racing design and engineered with a deep racing sound.

No electronic or valves.

The MPRDS™ 2-into-1 Exhaust System is developed specifically for performance-focused Dyna builds and Clubstyle customs, where sound, power, and style is a must.

Smart design for easy access to the oil drain plug — in any configuration.

Engineered for sporty riding, the system offers **optimal ground clearance** to handle aggressive lean angles without scraping; just pure performance, visible and audible. Its compact shape stays fully exposed, reinforcing the raw, style of your bike.



Models Available

- **Euro 0/1/2** 1991 - 2025 / Evo & Twin Cam / 5-Speed
- **Euro 3** 2006 - 2016 Twin Cam / Engines up to 110cci

(*) Limited Engine power

Homologated as well for reduced engine power as 24/4750 t/min and 34/5010 t/min

Fitment verified with OEM and aftermarket parts for maximum compatibility

- OEM Mid, Mid Further Forward and Advanced foot controls
- LeatherPros as well as all Thrashin saddlebags – Tested to fit not having any heat concern.
- Fitment of rear shock absorbers of any brand. Tested up to 14.5" shocks height.



2 in 1 Exhaust System

Euro 1 to 2 (1991 - 2005) 5-Speed Dyna Models

Bike Built by Bixe - Switzerland

@harley_bixe

Dyna

2-in-1 Exhaust Systems DETAILS

What's Included in the 2-in-1 Exhaust System

- 2 Headers
- 1 Silencer
- 2 catalytic converters integrated in the headers
- Street-legal **DB Killer**
- O₂ **Sensor Adapters** (compatible with OEM sensors)
- Complete mounting hardware
- **ECE approval number** laser-engraved under the silencer

NOTE: Heat shields are not included in the kit
and shall be ordered separately



2-in-1 Exhaust Systems

Fitment



Twin Cam 6-Speed Dyna models (2006-2017) with engines up to 110ci

Reference	Material/Finish	ECE-Type Approved
MPD746SS	SSteel/Satin	Euro 3
MPD746SB	SSteel/Black	Euro 3
MPD746SP	SSteel/Mirror Polished	Euro 3
MPD746ST	Titanium/Satin	Euro 3

Fitment



Twin Cam 6-Speed Dyna models (2006-2017) with engines up to 110ci

Reference	Material/Finish	ECE-Type Approved
MPD74R6SS	SSteel/Satin	Race Only

Fitment



5-Speed Dyna models (1999-2005) 1450 Engines

Reference	Material/Finish	ECE-Type Approved
MPD745SS	SSteel/Satin	Euro 2 / Euro 3
MPD745SB	SSteel/Black	Euro 2 / Euro 3
MPD745SP	SSteel/Mirror Polished	Euro 2 / Euro 3

Fitment



5-Speed Dyna models (1991-1998) 1340 Engines

Reference	Material/Finish	ECE-Type Approved
MPD745EVOS	SSteel/Satin	Euro 0 - Euro 1 - Euro 2
MPD745EVOB	SSteel/Black	Euro 0 - Euro 1 - Euro 2
MPD745EVOP	SSteel/Mirror Polished	Euro 0 - Euro 1 - Euro 2

Fitment



Evo & Twin Cam 5-Speed Dyna models (1988-2005) 1340/1450 Engines

Reference	Material/Finish	ECE-Type Approved
MPD74R5SS	SSteel/Satin	Race Only



2 in 1 Exhaust System

Euro 0/2 (1988up) FXR Models

Bike Built Malparidos - Switzerland

@malparidos_motoparts

Harley-Davidson®

FXR

Street Legal 2-in-1 for FXR models 1988-1999

Designed with a short racing design and engineered with a deep racing sound.
No electronic or valves.

The MPRDS™ 2-into-1 Exhaust System is now available for FXR builds and Clubstyle customs, where sound enhancement and style is a must.

Smart design for easy access to the oil drain plug.

Engineered for sporty riding, the system offers **the best possible ground clearance** to handle aggressive ride. Its compact shape stays fully exposed, reinforcing the raw, style of your bike.



Models Available

- Euro 0/1/2 1988 - 1998 Evo Engine / 5-Speed

Fitment verified with OEM pegs

- OEM forward controls
- OEM mid controls (Heat shields recommended)
- OEM roll passenger peg shall be replaced with a flat slimmer version.
- OEM rider floorboards shall be converted to single pegs.

2-in-1 Exhaust Systems DETAILS & MODELS

What's Included in the 2-in-1 Exhaust System

- 2 Headers
- 1 Silencer
- Street-legal **DB Killer**
- 2 catalytic converters integrated in the headers
- O₂ **Sensor Adapters** (compatible with OEM sensors)
- Complete mounting hardware
- **ECE approval number** laser-engraved under the silencer

NOTE: Heat shields are not included in the kit
and shall be ordered separately



NEW COMING IN JULY 2025

FXR 2-in-1 Exhaust Systems

Fitment

HD Evo 5-Speed FXR models (1988-1998) 1340 Engines



Reference

MPD746EVOS

MPD746EVOB

MPD746EVOP

Material/Finish

SSteel/Satin

SSteel/Black

SSteel/Mirror Polished

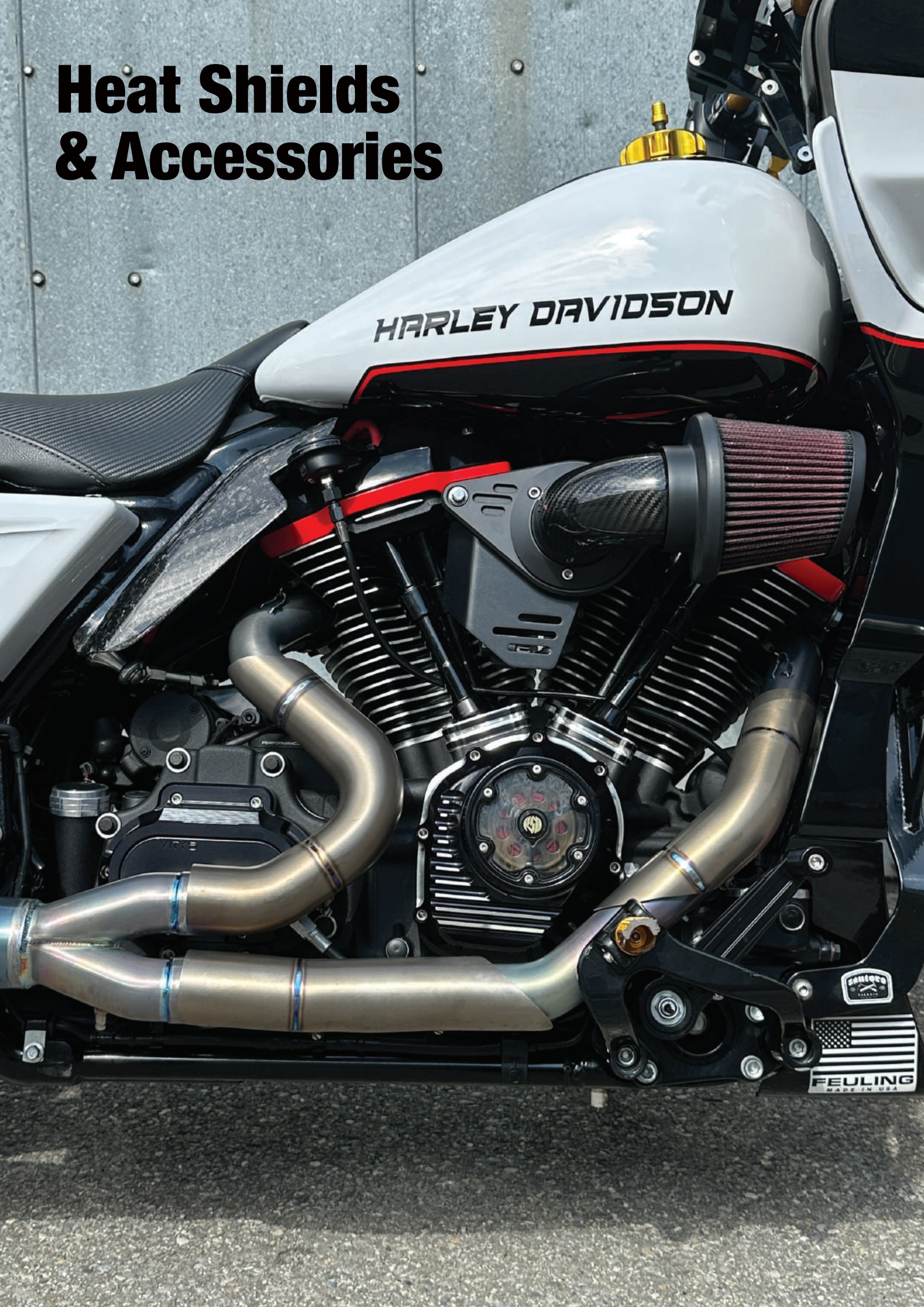
ECE-Type Approved

Euro 0 - Euro 1

Euro 0 - Euro 1

Euro 0 - Euro 1

Heat Shields & Accessories



Harley-Davidson®

All Models

Other Parts

Heat-Shields

Fitment	MPRDS™ 2-in-1 Exhaust Systems - 2007-2024 HD Touring		
	Reference	Material	Finish
	MPT69HSS	AISI 406 Stainless Steel	Satin Race with visible welds
	MPT69HSB	AISI 406 Stainless Steel	Black
	MPT69HSP	AISI 406 Stainless Steel	Mirror Polished
	MPT69HST	Titanium Grade 2	Satin Race with visible welds
Fitment	MPRDS™ 2-in-1 Exhaust Systems - 2000-2024 HD Softail		
	Reference	Material	Finish
	MPT74HSS	AISI 406 Stainless Steel	Satin Race with Visible Welds
	MPT74HSB	AISI 406 Stainless Steel	Black
	MPT74HSP	AISI 406 Stainless Steel	Mirror Polished
	MPT74HST	Titanium Grade 2	Satin Race with visible welds
Fitment	MPRDS™ 2-in-1 Exhaust Systems - 2005-2017 HD 6-Speed-Dyna		
	Reference	Material	Finish
	MPD746SHSS	AISI 406 Stainless Steel	Satin
	MPD746SHSB	AISI 406 Stainless Steel	Black
	MPD746SHSP	AISI 406 Stainless Steel	Mirror Polished
	MPD746SHST	Titanium Grade 2	Satin Race
Fitment	MPRDS™ 2-in-1 Exhaust Systems - 1898-2017 HD 6-Speed-Dyna & FXR (1988 up)		
	Reference	Material	Finish
	MPD745SHSS	AISI 406 Stainless Steel	Satin Race
	MPD745SHSB	AISI 406 Stainless Steel	Black Cerakote
	MPD745SHSP	AISI 406 Stainless Steel	Mirror
	MPD745SHST	Titanium Grade 2	Satin

dB Killers

Fitment	All MPRDS™ 2-in-1 Exhaust Systems		
	Reference	Name	ECE-Type Approved
	MPDBL	Db Killer Legal	From Euro 0 to Euro 5
	MPDBRM*	Db Killer Race Medium	Race Only
	MPDBRXL*	Db Killer Race XL	Race Only

Special Bracket for Breakout - Fat Boy

Reference	Name
MPFAB	2 in 1 Fat Ass bracket extension



Disclaimer:

This version is intended for closed-course or off-road use only.

It is not approved for use on public roads and does not comply with emission regulations.

(*) IMPORTANT NOTICE

Any removal or alterations of components in the exhaust system, including engine modifications, may enhance performance and increase the sound output. However, it is important to note that such modifications render this exhaust system non-compliant with homologation-enforced regulations.


MALPARIDOS

"Life's short, ride custom!"



www.malparidosmotoparts.com

📷 Follow us [malparidos_motoparts](#) & [malparidos_exhaust_mprds](#)

Sales: arianna@malparidos.ch / +41 78 632 3074